

# AssetView

*Intelligent Asset Manager*



Transform the power of your intelligent devices in  
Reliability and Performance

***AssetView Intelligent Device Manager***

*A plant asset management software tool which provides diagnostics, configuration, calibration, maintenance management and documentation for intelligent devices such as field instruments, valve positioners and controllers.*

## Benefits

Companies need to take advantage of every opportunity to become more competitive, and an excellent one is in the operational improvements related to asset management.

Industry-standard digital technologies, such as FOUNDATION Fieldbus and HART, now allow the collection of large amounts of information from the most diverse types of instruments and other devices of an industrial plant.

However, having data is not enough. It is necessary to make intelligent use of it. And this is exactly AssetView's purpose of, an asset management tool which allows users to obtain significant gains in operational efficiency through Online Monitoring and Analysis of Intelligent Device Diagnostic information. All this combined with a set of resources to support reactive, preventive, predictive and proactive maintenance activities.



### Higher EFFICIENCY:

- Productivity
- Quality
- Availability

### Lower COSTS related to:

- Operation and maintenance
- Health, Safety and Environmental Risks
- Waste and Rework

This way, AssetView makes it possible, for example, reducing downtimes caused by equipment failures by faster execution of reactive maintenance activities, and by eliminating downtimes through the implementation of proactive maintenance activities based on predictive diagnostics information.

## Greater Visibility and Ease of Access

Many devices are installed in difficult access areas inside industrial plants, such as on top of towers, on top of large equipment, in tight spaces and even in dangerous areas involving, for instance, extreme temperatures or the presence of dangerous gases.

Other times, devices can be in remote locations, hundreds of miles away.



*Difficult Physical Access to Devices*



*Remote Oil & Gas Production Unit*

In situations like these, the possibility of quick access to devices information through a maintenance station, even before going to the physical location, is extremely valuable.

It is also important to remember that many problems can be solved without the need of physical interventions. And, even when a field trip is necessary, the professional will be able to know in advance about the issue and can, for example, take the correct tools and spare parts to the location, reducing consequently the time to repair.

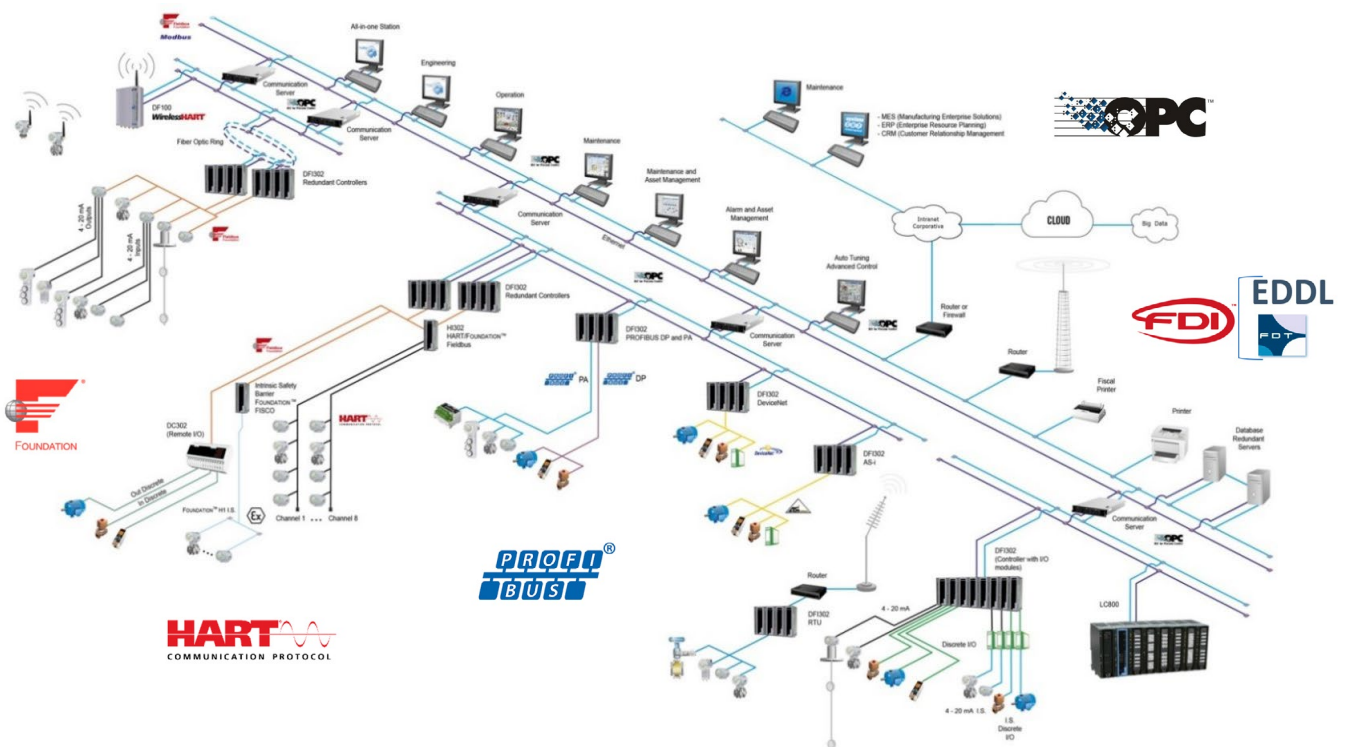


Análise online

## Open Technologies and Best Practices for Greater Reach

The AssetView software, designed and maintained by Nova Smar S/A, in addition to the continuous search for innovations and the use of best practices, is also based on the use of industry standard open technologies, such as Hart, WirelessHart, Profibus, FOUNDATION Fieldbus, OPC and FDI (EDDL, FDT).

### WirelessHART



This ensures that users can easily integrate devices from different manufacturers, further increasing the reach and, consequently, the benefits of the solution.

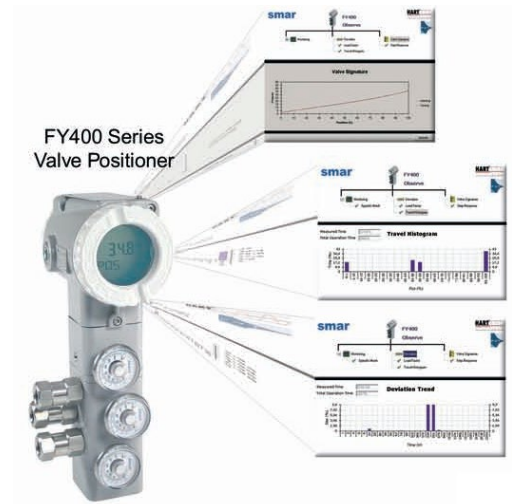
## Powerful Features for a More Productive Maintenance

AssetView is a powerful intelligent devices management tool and it has features which allow users to quickly identify and predict device malfunctions. Among its features are the online monitoring of diagnostic information, the generation of alerts and notifications in real time, the generation of statistical data, the collection of historical data, the generation of reports and the scheduling of many maintenance tasks. And access to the tool can be made from anywhere, even outside the plant, via Web.

All of its resources were designed to avoid unscheduled downtimes and to minimize scheduled downtimes of production processes, aiming to transform reactive maintenance into planned maintenance (one of the pillars of the TPM, Total Performance Management, approach), with emphasis on predictive and proactive maintenance, thus combining concepts of Reliability Centered Maintenance (RCM).

AssetView's powerful capabilities include:

- Identification, calibration, configuration and online monitoring of intelligent devices, from any manufacturer;
- Maintenance alerts based on Diagnostics;
- Information storage;
- Calibration management;
- Advanced diagnostics through graphics;
- Maintenance Planning (Corrective, Preventive, Predictive and Proactive), with e-mail notifications;
- Graphics with online equipment data;
- Reconciliation (History of device configuration states);
- Device Library;
- Audit Trail reports;
- Web browser access;



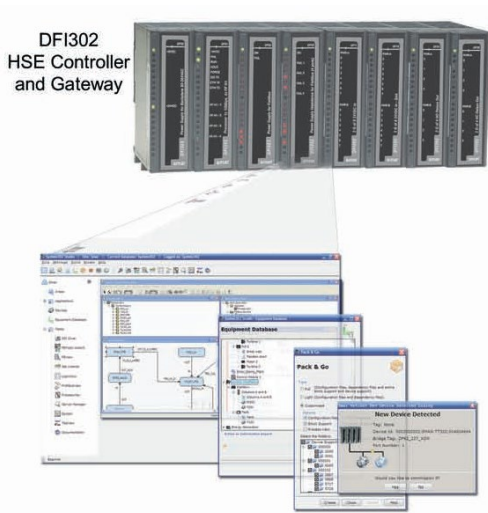
## Conveniences for Maintenance Teams

AssetView includes several functionalities that make the management of maintenance activities easier. Maintenance tasks can be scheduled and automatic e-mail notifications can be generated, for instance, without the need of other piece of software.

The tool includes also a device library on which all asset related documentation such as manuals, mounting procedures, datasheets, reports and links to manufacturers websites. It facilitates users access, helping their day by day activities.

Its powerful user interface allows access to every piece of information available in the field instruments (such as transmitters and valve





positioners) and other types of devices from any manufacturer. It facilitates the configuration, parameterization, calibration and troubleshooting activities.

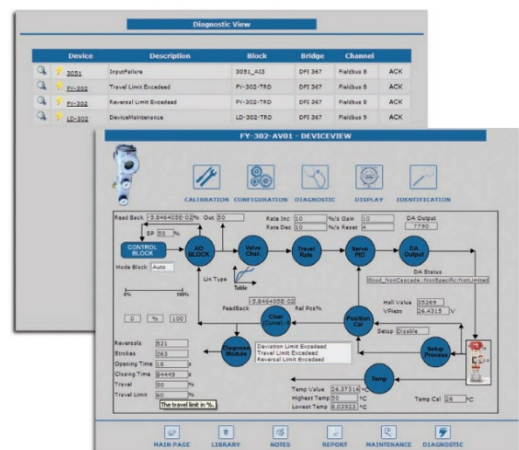
All user modifications are registered in AssetView database. It allows current configurations to be reconciliated with past configurations.

Additionally, AssetView includes a Wizard that facilitates the integration of new equipment via graphical interface using its EDDLs (Enhanced Device Description) files. It also allows the definition of advanced diagnostics, including available graphics.

## Ensure Better Results

Some of the most important AssetView benefits are:

- **Improved operational reliability and efficiency (productivity, quality and availability).**
- **Reduction of unscheduled downtime and maintenance costs.** Online monitoring of devices allows detection of problems before they cause damage to the Plant. In addition, they avoid unnecessary maintenance on equipment that does not need it;
- **Quick problem solving.** Remote access to diagnostic information allows for quick identification and resolution of problems, in addition to simplifying activities involving parameterization, diagnosis and maintenance, minimizing downtime, for instance;
- **Reduced device configuration and commissioning time.**
- **Reduction of accident risks due to equipment failures.**



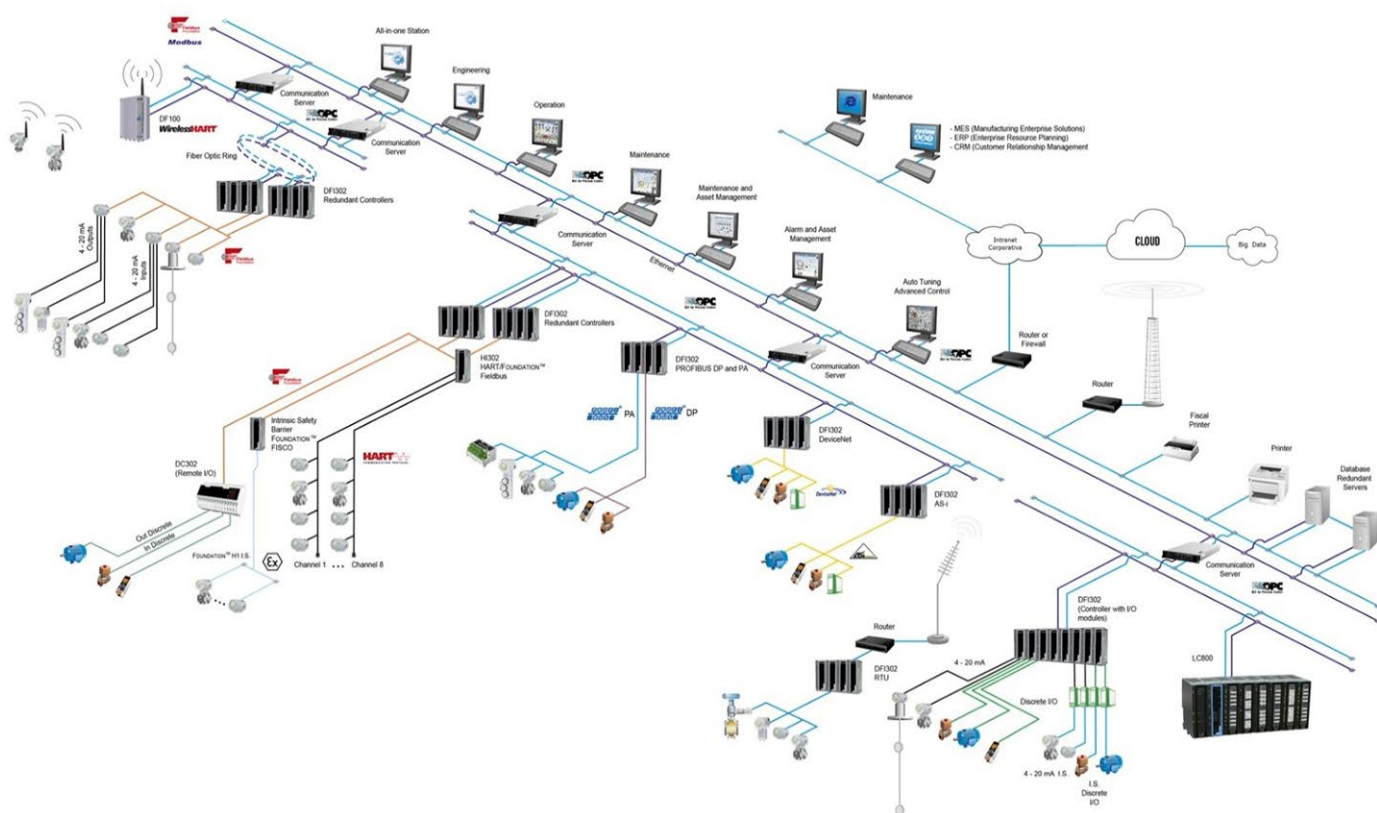
## Pioneering and Innovation

AssetView has generated two international patents for SMAR, ratifying its culture of innovation and pioneering spirit: 6,631,298 e 6,725,182.



# AssetView

Intelligent Asset Manager



Open Digital Ecosystem

Rua Dr. Antônio Furlan Junior, 1028 - Sertãozinho, SP - CEP: 14170-480 - Brazil  
 insales@smar.com.br | +55 (16) 3946-3599 | www.smar.com